

First Strike Meters

When it needs to be done right the first time!

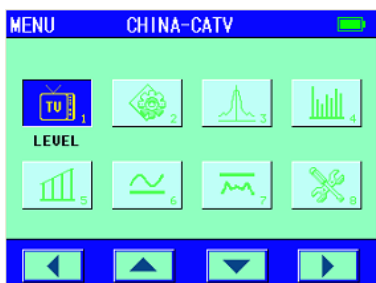


Features:

- Direct frequency input from 5(46)MHz ~ 870MHz
- DVB average power measurement
- Direct channel input of channel numbers
- Simultaneously displays video carrier and audio carrier strength, and V/A measurement
- Select-able dBmV, dBμV and dBm units
- Tilt measurement of three user definable channels
- Carrier-to-noise ratio measurement
- Trunk voltage measurement
- Large 128*64 dot matrix LCD display with back light
- RS-232C port with PC communication function
- battery-powered handheld model, Internal Li-ion battery with included charger
- Rugged, compact and mobile, with rubber jacket, carry strap and manual
- Battery life: ≈8 hours

RA2002C

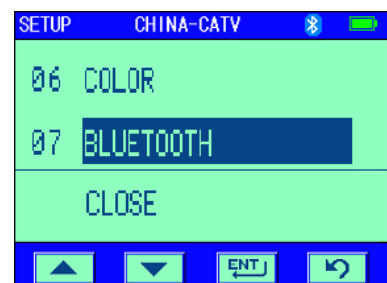
46~870MHz, COLOR LCD, channel level, C/N, V/A, trunk voltage, digital channel power, BER, MER, SPECTRUM, AUTO test, scan.



Main menu



Setup menu



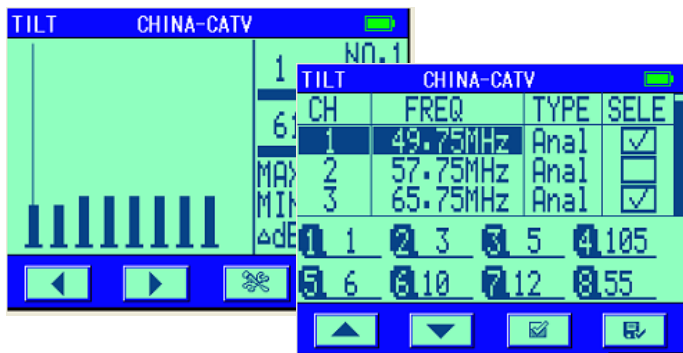
Bluetooth is option

First Strike Meters



Unique features - Test menu

RA2002C	VS	Others
. Graphic bar indicates the value of the signal level or channel power.		No graphic bar only displays as number.



Unique features- 8 channel TILT

RA2002C	VS	Others
. View 8 Channel TILT at the same time. . View the test value by pressing one button.		. 3 Channel TILT can't display the test value of all channels.



Unique features - Channel edit

RA2002C	VS	Others
. Channel plan can be Edited on meter. . Even the frequency can be edited.		. Most can't be edited on meter. . Even channel can't be edited, the frequency can't be edited.



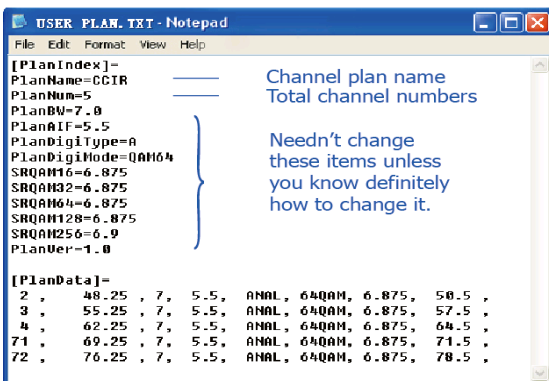
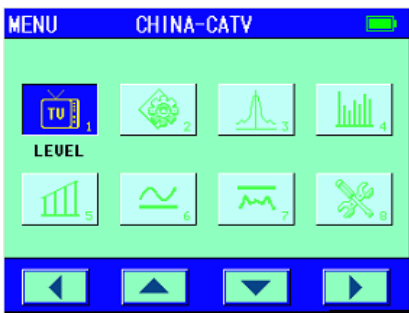
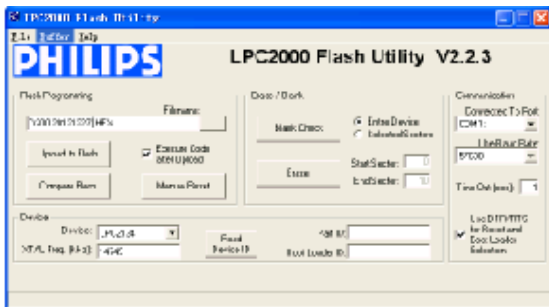
Unique features - Auto test

RA2002C	VS	Others
. Autotest allows you test up to 8 channels and get test result sheet by press one button.		. Most other brands don't have auto test functions.

First Strike Meters



Li-ion powered



Unique features - Li-ion battery

RA2002C	VS	Others
Li-ion battery. Longer working Time, >=8 hours		Mi-NH battery, less working time, normally 3 hours.

Unique features - Upgrade

RA2002C	VS	Others
Can be upgraded to the latest firmware, By using the upgrading software, to add functions, fix meters, or keep up to date.		Normally can only be upgraded at factory.

Unique features - Color LCD

RA2002C	VS	Others
The meter adopts 320x240 TFT color LCD, higher user experience, more content in a screen.		Other brands uses black and white LCD.

Unique features - Edit channel with .TXT file.

RA2002C	VS	Others
You can use Windows Notepad to edit the channel plan and then program to PC.		Most other brands can't edit the channel plan by .TXT file.

Unique features - Advanced Calibration technology.

RA2002C	VS	Others
Most advanced calibration technology, uses R&S (Germany) digital signal generator, calibrates meter at high and low temperatures.		Most other brands use normal branded signal generators and calibrated at normal temperatures.

First Strike Meters

Specification:

QAM Analysis (Digital Channel)

Support: 16/32/64/128/256QAM DVB-C;
Demodulation type: ITU-TJ.83-AnnexA/AnnexB/AnnexC
Symbol Rate: 1.00MS/s ~7.00MS/s
Bandwidth: 1MHz~8MHz
Frequency tuner: 50 KHz
MER measurement range: 19~40dB
BER Pre/post FEC measurement range: 10E-2 to 10E-9
Tuning range: 46 MHz~870MHz
Tuning mode: by channels or by frequency
Power measurement type: QAM, QPSK, DOFDM

Frequency:

Range: 46MHz—870MHz
Resolution: 10KHz
Bandwidth: 280KHz
Frequency tuner: 50 KHz
Accuracy: ± 50 ppm @ 20° C $\pm 5^\circ$

Digital Channel Power (Average):

Level range: 35 to 120 dBuV
Accuracy: ± 2.0 dB@10° to 30°C (50° to 86°F) ± 3.0 dB@-10° to +40°C (14° to 104°F).
Resolution: 0.1dB

Constellation (Optional)

Display size: 64 and 256 QAM Constellation with zoom capability

Channel Type:

Analog TV: TV
Digital TV: QAM, QPSK
FM channel: Single Frequency

Analog Level Measurement:

Range: 25dBuV—120dBuV
Accuracy: ± 2 dB
Resolution: 0.1dB
Input Impedance: 75ohm
Wave detection: peak value

Channel Scan:

Number of Channels: 200 channels max.
Scanning speed: 4 channels / sec
Scale: 1, 2, 5, 10, 20 dB/div
Zoom: 1X, 2X, 4X three levels of magnification or full Channel Plan scan.
Marker: 1 (frequency and signal level)

First Strike Meters

Spectrum Analysis:

Bandwidth: Ranging between 4.5MHz, 9MHz, 27MHz, 54MHz, and full span.

Scale: 1, 2, 5, 10, 20 dB/div

Marker: 1 (Frequency and signal level)

Carrier-Noise Ratio (C/N):

Input range: 65dBuV (minimum input level).

Measurement range: 30 to 54 dB

Accuracy: ± 2 dB

Resolution: 0.1dB

Tilt measurement:

Number of channels: 8

Resolution: 0.1dB

Trunk Voltage measurement:

Input range: 0-100VAC

Accuracy: ± 1.5 V Resolution 0.1V

Resolution: 0.1V

Auto-Test

Number of channels: 8

Tests: Level or digital channel power

Others:

Channel Plan:

Number of Channels: 200 channels max

Number of Learned Channel Plan: 17 max. 8 preset, 8 editable by PC, 1 user defined.

Power Supply:

Battery: 11.1V 1.5AH Li-ion battery,

Charger: AC 100V-240V/50Hz

Working Time: ≥ 8 hours (full charged battery).

Auto power off: Selectable (10 min, 20 min, 30 min, always on)

Charging Time: 5-10 hrs.

Connector type: F81 connector.

Display: 320*240 Color LCD

Communication Port:

RS-232C

Storage:

256 Kb of memory;

Up to 200 complete scan files (200 channels, max); less if other files (Level, Tilt, QAM, Spectrum) are saved

Gross weight: 1 kg

Net weight: 0.5kg (with rubber jacket)

Dimensions: 85mm*160mm*40mm

Package: 220mm*177mm*62mm

First Strike Meters

Ordering guide:

Model	Main Features
RA2002Q	46~870MHz, 128*64 B/W LCD, digital power
RA2002C	46~870MHz, 320*240 Color LCD, digital power, (MER, BER is optional).