

First Strike FS1 Upgrade from K series to L series

Warnings and precautions.

This process requires certain technical skills such as the ability to dis-assemble and re-assemble the meter, the ability to solder to the PCB of the meter and the ability to load software to the meter. The required soldering **MUST** be done with the **PROPER** soldering equipment to avoid damage to the meter. Proper grounding of the equipment and the operator should be strictly adhered to. If you do not have the skills or the proper equipment, **DO NOT** attempt this upgrade. Repairs required because of damage or failure caused by the attempted upgrade will be charged at normal repair rates for both technical time and replacement parts. First Strike Meters, DMS International nor Tim Heinrichs will not be held accountable for the use or mis-use of this information.

This process requires software to be loaded to your meter from your computer. You should have the ability to load software to the meter **BEFORE** attempting the upgrade. You can find more information about our software on our website. <http://firststrikemeters.com/fs1-l-downloads.php>

In this kit you will receive one (1) pre-tested display screen and the required upgrade software. Once you have installed the new display screen, your meter will not work properly until you have installed the upgrade software. Once your meter is working properly, you can check the [First Strike Meters FS1 software page](#) for the latest software.

L series display screen



Software

Will be provided to you at the time of your purchase.

Copyright © 2012, All rights reserved, This information remains the property of Tim Heinrichs.

All materials contained in this document are protected by United States and international copyright law and may not be reproduced, distributed, transmitted, displayed, published or broadcast without the prior written permission of Tim Heinrichs. You may not alter or remove any trademark, copyright or other notice from copies of the content.

First Strike FS1 Upgrade from K series to L series

Replacing your display screen

1. Remove the Ruff Neck jacket by holding the meter upside down and placing your thumbs on the bottom corners of the meter with your fingers through the large opening in the back. Now press the corners of the Ruff Neck jacket off the meter.



Once the corners are free from the meter, pull the meter out of the Ruff Neck jacket.

2. Open and remove the battery door.



Copyright © 2012, All rights reserved, This information remains the property of Tim Heinrichs. All materials contained in this document are protected by United States and international copyright law and may not be reproduced, distributed, transmitted, displayed, published or broadcast without the prior written permission of Tim Heinrichs. You may not alter or remove any trademark, copyright or other notice from copies of the content.

First Strike FS1 Upgrade from K series to L series

3. Unplug and remove the battery.



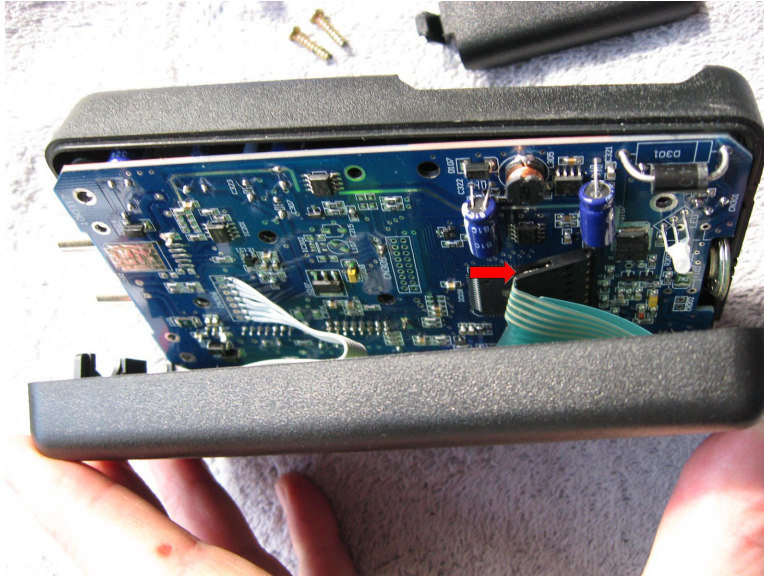
4. Remove the four (4) screws that hold the meter housing together.



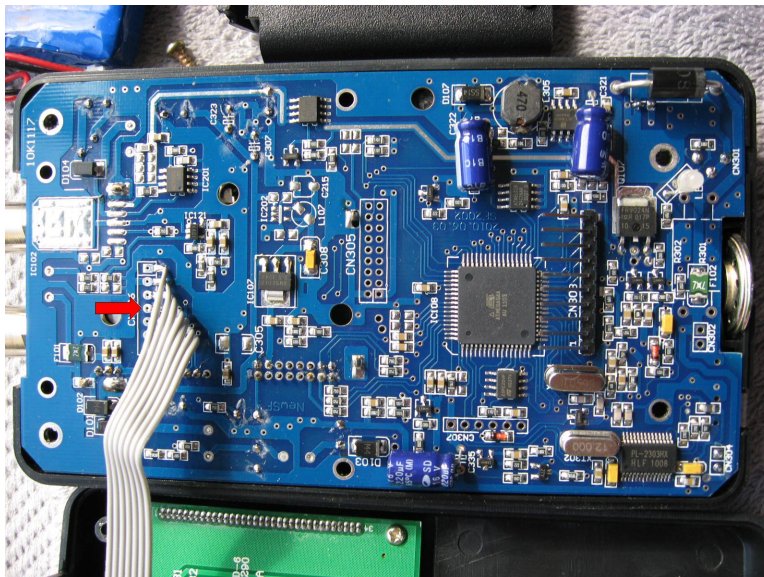
Copyright © 2012, All rights reserved, This information remains the property of Tim Heinrichs. All materials contained in this document are protected by United States and international copyright law and may not be reproduced, distributed, transmitted, displayed, published or broadcast without the prior written permission of Tim Heinrichs. You may not alter or remove any trademark, copyright or other notice from copies of the content.

First Strike FS1 Upgrade from K series to L series

5. Carefully open the meter housing, and carefully unplug the keypad connector from the PCB. Use caution not to break the wires from the display screen to the PCB.



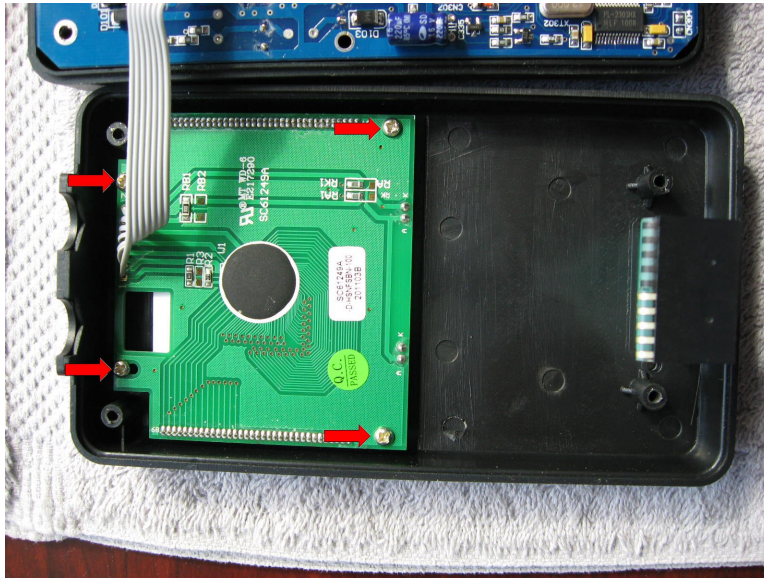
6. Take note of the positioning and order of the ribbon wire connections from the display screen to the PCB. Using the proper soldering equipment, carefully remove the seven connections of the display screen ribbon wire from the PCB.



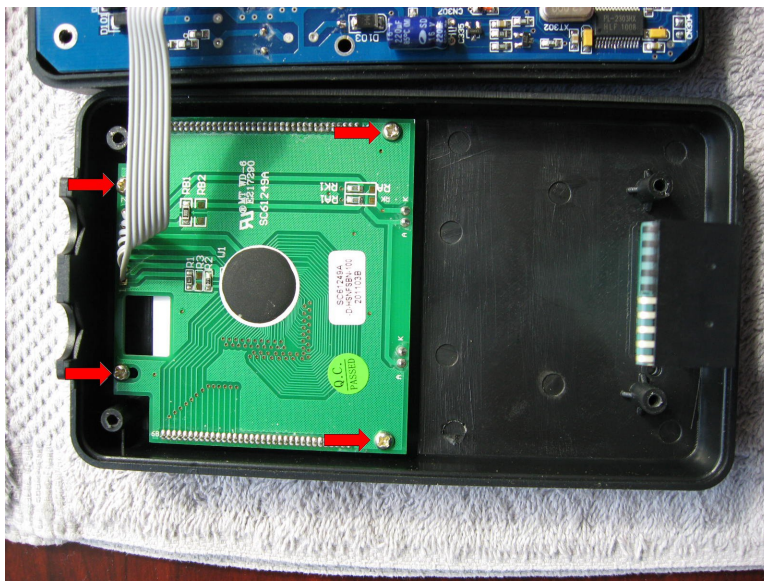
Copyright © 2012, All rights reserved, This information remains the property of Tim Heinrichs. All materials contained in this document are protected by United States and international copyright law and may not be reproduced, distributed, transmitted, displayed, published or broadcast without the prior written permission of Tim Heinrichs. You may not alter or remove any trademark, copyright or other notice from copies of the content.

First Strike FS1 Upgrade from K series to L series

7. Remove the display screen from the housing by removing the four (4) screws that hold it in place.

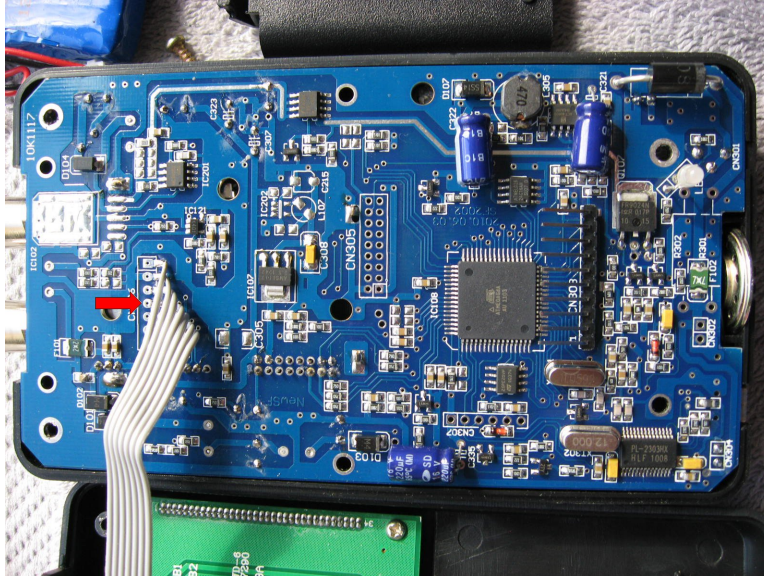


8. Install the new display screen using the four (4) screws to hold it in place.

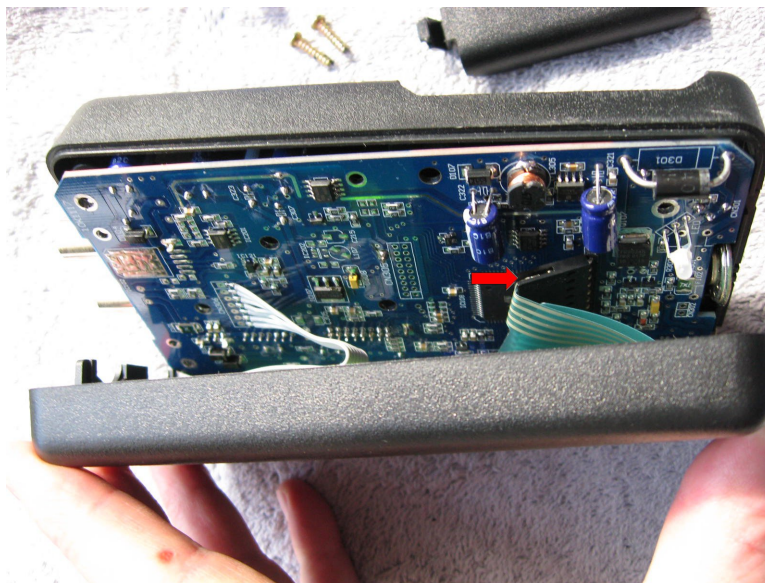


First Strike FS1 Upgrade from K series to L series

9. Solder the seven (7) wires from the display screen back to the PCB in the same order as you removed them.



10. Plug the ribbon connector of the keyboard in to the connector on the PCB.



Copyright © 2012, All rights reserved, This information remains the property of Tim Heinrichs. All materials contained in this document are protected by United States and international copyright law and may not be reproduced, distributed, transmitted, displayed, published or broadcast without the prior written permission of Tim Heinrichs. You may not alter or remove any trademark, copyright or other notice from copies of the content.

First Strike FS1 Upgrade from K series to L series

11. Carefully re-assemble the meter housing and secure it with the four (4) screws.



12. Install the battery and plug the battery to the battery connector.



Copyright © 2012, All rights reserved, This information remains the property of Tim Heinrichs. All materials contained in this document are protected by United States and international copyright law and may not be reproduced, distributed, transmitted, displayed, published or broadcast without the prior written permission of Tim Heinrichs. You may not alter or remove any trademark, copyright or other notice from copies of the content.

First Strike FS1 Upgrade from K series to L series

13. Install the battery access door.



14. Load the upgrade software and test your meter for proper functions.

If your meter is not working, inspect your work closely and correct any problems you find.

15. Install the Ruff Neck jacket by first inserting the F connectors through the holes in the Ruff Neck jacket then pressing the bottom of the meter into the Ruff Neck jacket.

16. Install the software provided.

If something has gone wrong with your upgrade and you need your meter repaired, we will be happy to look at your meter. Bench time and parts will be charged at our normal repair rate.

Once the upgrade is completed you will use ONLY “L” series software in your meter. DO NOT load “K” series software to an upgraded meter.

Copyright © 2012, All rights reserved, This information remains the property of Tim Heinrichs.

All materials contained in this document are protected by United States and international copyright law and may not be reproduced, distributed, transmitted, displayed, published or broadcast without the prior written permission of Tim Heinrichs. You may not alter or remove any trademark, copyright or other notice from copies of the content.