

# First Strike FS1 Display Repair/Replacement

## Warnings and precautions.

This process requires certain technical skills such as the ability to dis-assemble and re-assemble the meter and the ability to solder to the PCB of the meter. The required soldering MUST be done with the PROPER soldering equipment to avoid damage to the meter. Proper grounding of the equipment and the operator should be strictly adhered to. If you do not have the skills or the proper equipment, DO NOT attempt this repair. Repairs required because of damage or failure caused by the attempted display replacement will be charged at normal repair rates for both technical time and replacement parts. First Strike Meters, DMS International nor Tim Heinrichs will not be held accountable for the use or mis-use of this information.

---

You will receive one (1) pre-tested display screen.

## L series display screen



Copyright © 2012, All rights reserved, This information remains the property of Tim Heinrichs. All materials contained in this document are protected by United States and international copyright law and may not be reproduced, distributed, transmitted, displayed, published or broadcast without the prior written permission of Tim Heinrichs. You may not alter or remove any trademark, copyright or other notice from copies of the content.

# First Strike FS1 Display Repair/Replacement

## Replacing your display screen

1. Remove the Ruff Neck jacket by holding the meter upside down and placing your thumbs on the bottom corners of the meter with your fingers through the large opening in the back. Now press the corners of the Ruff Neck jacket off the meter.



Once the corners are free from the meter, pull the meter out of the Ruff Neck jacket.

2. Open and remove the battery door.



Copyright © 2012, All rights reserved, This information remains the property of Tim Heinrichs. All materials contained in this document are protected by United States and international copyright law and may not be reproduced, distributed, transmitted, displayed, published or broadcast without the prior written permission of Tim Heinrichs. You may not alter or remove any trademark, copyright or other notice from copies of the content.

# First Strike FS1 Display Repair/Replacement

3. Unplug and remove the battery.



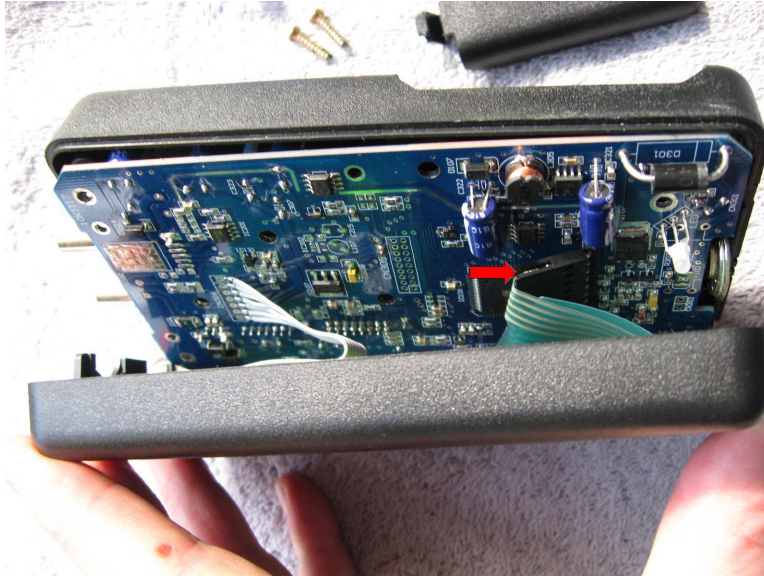
4. Remove the four (4) screws that hold the meter housing together.



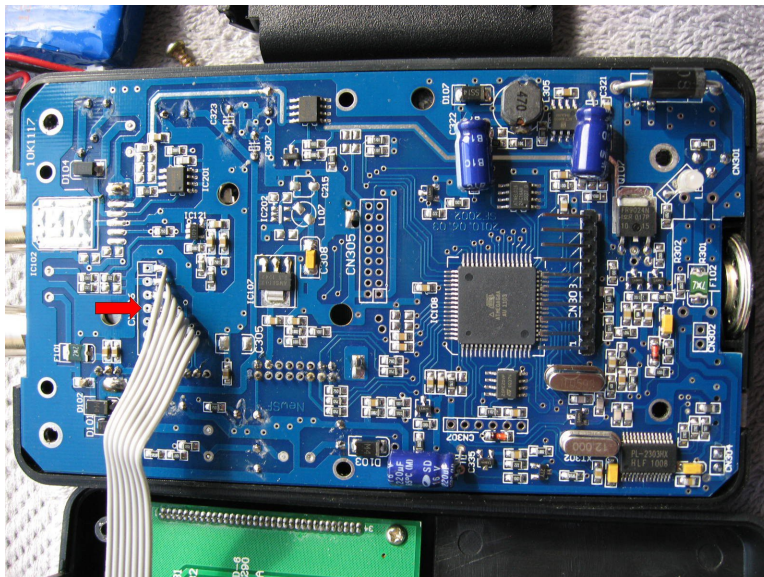
Copyright © 2012, All rights reserved, This information remains the property of Tim Heinrichs. All materials contained in this document are protected by United States and international copyright law and may not be reproduced, distributed, transmitted, displayed, published or broadcast without the prior written permission of Tim Heinrichs. You may not alter or remove any trademark, copyright or other notice from copies of the content.

## First Strike FS1 Display Repair/Replacement

- Carefully open the meter housing, and carefully unplug the keypad connector from the PCB. Use caution not to break the wires from the display screen to the PCB.



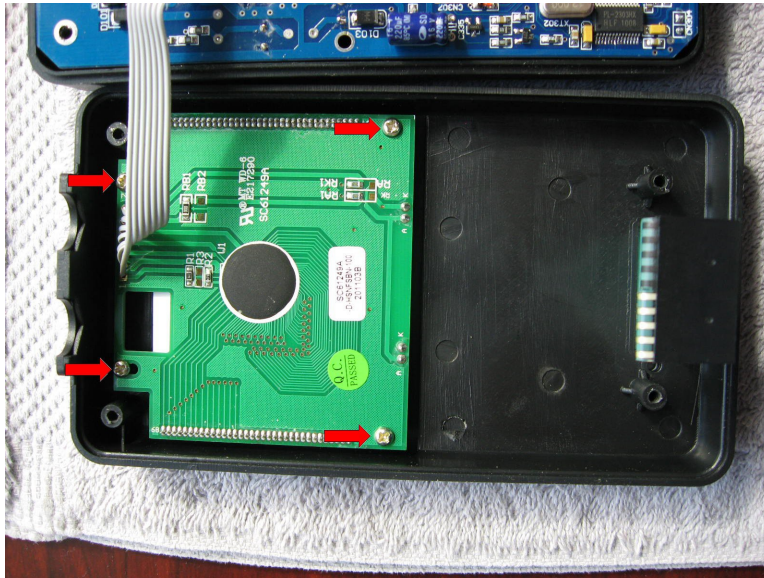
- Take note of the positioning and order of the ribbon wire connections from the display screen to the PCB. Using the proper soldering equipment, carefully remove the seven connections of the display screen ribbon wire from the PCB.



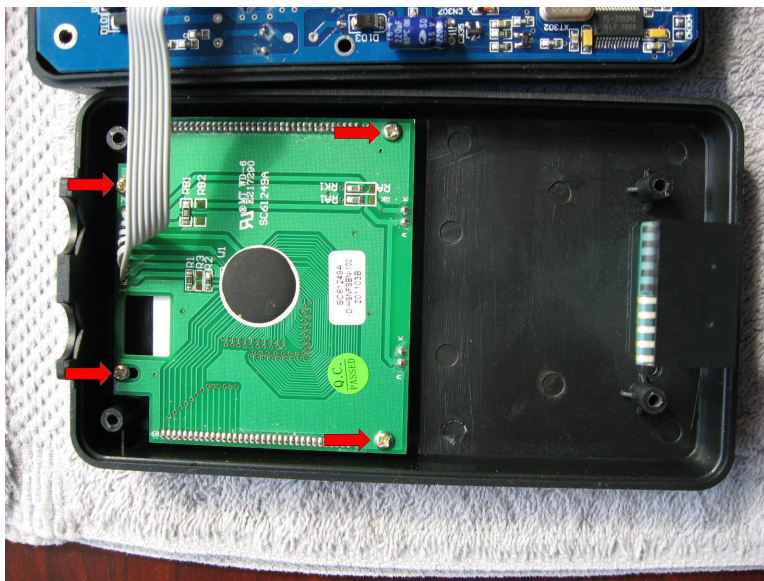
Copyright © 2012, All rights reserved, This information remains the property of Tim Heinrichs. All materials contained in this document are protected by United States and international copyright law and may not be reproduced, distributed, transmitted, displayed, published or broadcast without the prior written permission of Tim Heinrichs. You may not alter or remove any trademark, copyright or other notice from copies of the content.

## First Strike FS1 Display Repair/Replacement

7. Remove the display screen from the housing by removing the four (4) screws that hold it in place.



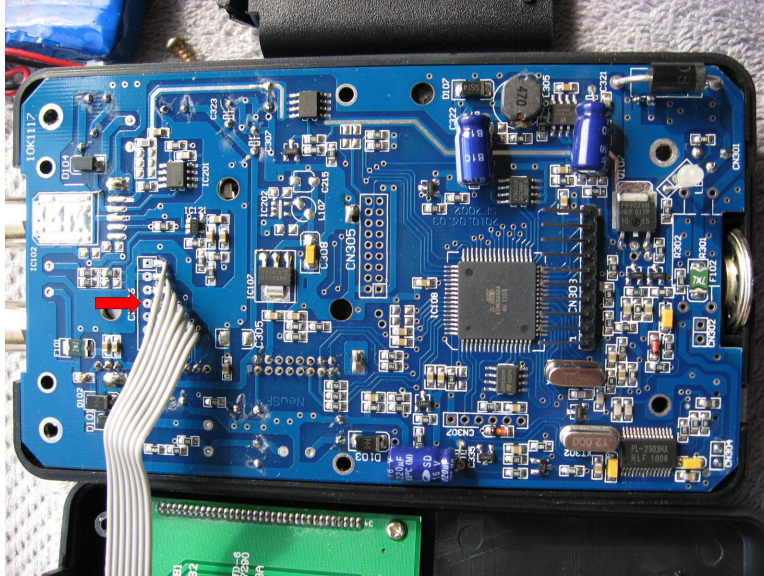
8. Install the new display screen using the four (4) screws to hold it in place.



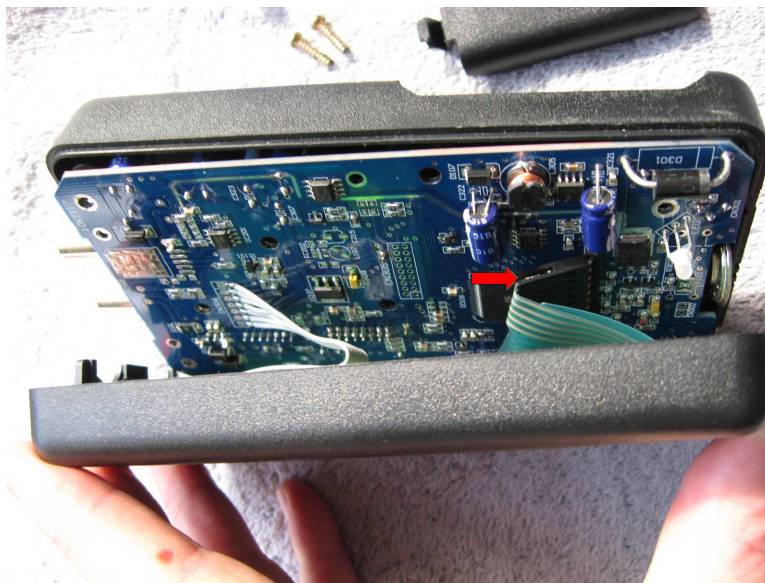
Copyright © 2012, All rights reserved, This information remains the property of Tim Heinrichs. All materials contained in this document are protected by United States and international copyright law and may not be reproduced, distributed, transmitted, displayed, published or broadcast without the prior written permission of Tim Heinrichs. You may not alter or remove any trademark, copyright or other notice from copies of the content.

## First Strike FS1 Display Repair/Replacement

9. Solder the seven (7) wires from the display screen back to the PCB in the same order as you removed them.



10. Plug the ribbon connector of the keyboard in to the connector on the PCB.



Copyright © 2012, All rights reserved, This information remains the property of Tim Heinrichs. All materials contained in this document are protected by United States and international copyright law and may not be reproduced, distributed, transmitted, displayed, published or broadcast without the prior written permission of Tim Heinrichs. You may not alter or remove any trademark, copyright or other notice from copies of the content.

# First Strike FS1 Display Repair/Replacement

11. Carefully re-assemble the meter housing and secure it with the four (4) screws.



12. Install the battery and plug the battery to the battery connector.



Copyright © 2012, All rights reserved, This information remains the property of Tim Heinrichs. All materials contained in this document are protected by United States and international copyright law and may not be reproduced, distributed, transmitted, displayed, published or broadcast without the prior written permission of Tim Heinrichs. You may not alter or remove any trademark, copyright or other notice from copies of the content.

# First Strike FS1 Display Repair/Replacement

13. Install the battery access door.



14. Turn your meter on and test your meter for proper functions.

If your meter is not working, inspect your work closely and correct any problems you find.

15. Install the Ruff Neck jacket by first inserting the F connectors through the holes in the Ruff Neck jacket then pressing the bottom of the meter into the Ruff Neck jacket.